

NYHBC002 Blinds Chain Controller



Remote Version

Character

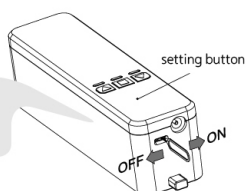
- 1 No change of existing blinds , no tubular motor. One touch , manual to motor;
- 2 Simple mounting , Easy setting , DIY 3-5 minutes at fingertip position;
- 3 One remote can control one or several blinds at same time ;
- 4 Via broadlink etc device, compatible with google home , alexa echo etc;



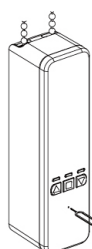
1 Open Motor

Surface up, slide mini button to right, here "di" voice , motor open;

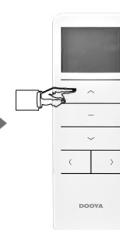
Note: Mini button, pls move carefully, prevent break;



2 Built Connector with Remote



Insert mobile pin to "setting button" hole, will touch one button ,and hear voice "di di"



Press "up" or "down" button on remote , here a long "di---" voice

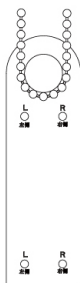
Note: Press the remote button when "di di" voice still on

motor and remote built connector

3 Mounting

1

Pull down the blinds to the similar mounting position. Put card on the bottom of chain, tight chain , According the chain position, mark "L" or "R" on hole, put mounting bracket on card's position, (pls note card outside of the bottom bar)



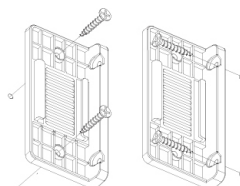
2

Installation mode 1:
3M Adhesive, advice 3M use after 12 hours.



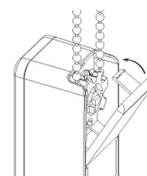
3

Installation mode 2:
The whole on mounting bracket aligned marked position, Fix screw on the hole; two position for choose;



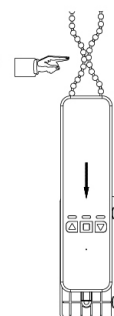
4

Press upback board outside, put suitable gear on, take chain around gear, close upback board.



5

Tight chain on the motor , put motor slide groove down, until motor tight on groove, pls choose suitable chain tension for stable running.



Note: Pls be sure use the suitable gear for the chain , and adjust the tension , otherwise will noisy.

4 Motor Direction

Press up or down button, see motor if on correct direction.

Adjust motor direction: If motor run on opposite direction, Insert mobile pin to the Setting hole, here "di di di" voice ,pull out , Insert mobile pin again , here a long "di" voice , motor direction changed.

Note: pls insert the pin again when voice "di di di" still on

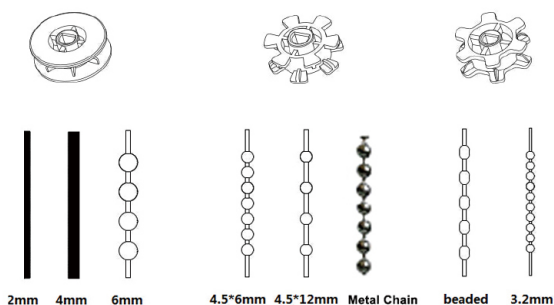
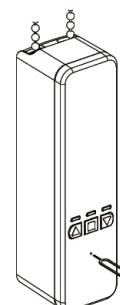
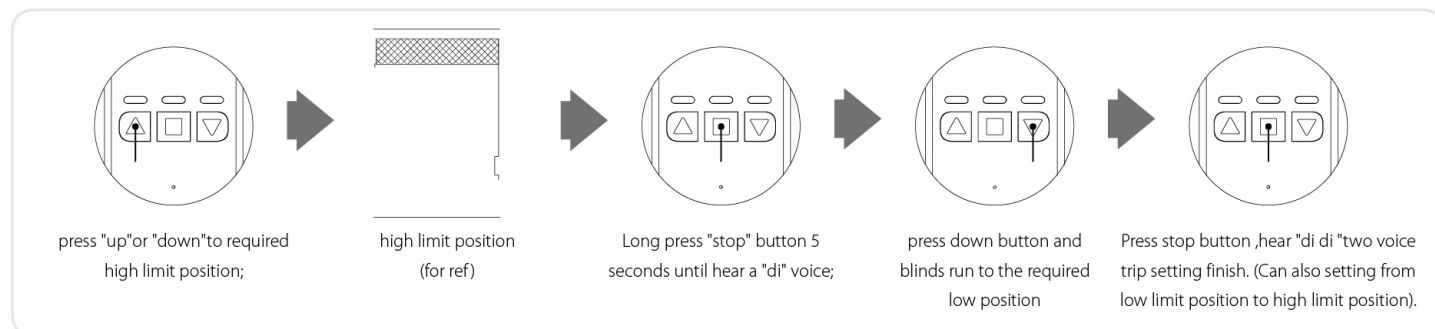


Photo 1 Suitable gear and chain

5 Trip Setting

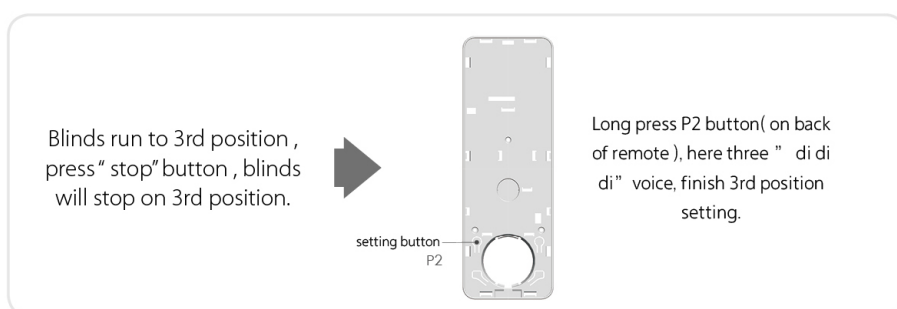
1 Up and down trip



2 Preferred 3rd position: After the up limit and down limit setting , you can set preferred 3rd stop position between them as the half position.

Operating: Long press "stop" button 5 seconds, the blinds will stop automatically on 3rd position.

Note: If not use 3rd position , the blinds still run during up and down position.



Note: If trip change for some urgent , pls reset .

6 Function Setting

1 One remote can control one or multi motor controller at same time;



2 15 channel remote , each motor controller can run separately with each channel, channel 0 can order other channel run separately or together ;

3 Connector with Google Home , Alexa Amazon via broadlink etc;

NOTE:

Power: Motor no any response , or hear voice " di di di", it indicates that the battery will run out, pls use adapter for power.

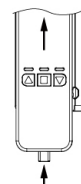
7 Recover factory setting

Recover factory setting

Long press setting button with mobile pin, here a long " di " voice , no connector with remote. Long press stop button , cancel trip setting , recover factory setting.

Product take out

Top up the projection on bottom, slide upon groove, open upback board and take out chain.



Parameters

Name	Blinds Controller	Model	NYHBC002	Control Method	Remote or Manual
Torque	1.35N.m	Speed	55rpm	Adapter Voltage	110V-240V
Frequency	433GHz	Voltage	12V	Rated Current	1.2A
Max Blinds Size	8ft(2.5m)*12ft(3.5m)	Max Weight	10KG	Battery Capacity	12V/1200mAh
Distance	20m	Compatible	Compatible with google home, alexa amazon via broadlink etc		
Full Battery Lasting Time	20-80 days, depend on blinds size and using times				

Note: all product interpretation rights belong to Ningbo Yihao Blinds Co.,Ltd



NINGBO YIHAO BLINDS CO.,LTD

Address: No.18 Changxing Road Luotuo Industry Zone Ningbo Zhejiang China 315202

Web: [Http://www.yhblinds.com](http://www.yhblinds.com) Phone: 0086-574-87905396

