

# YH002 Blinds Chain Motor Controller



## Mobile Version

### Character

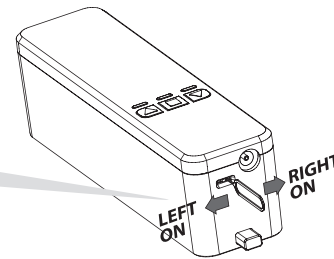
- 1 No change of existing blinds , no tubular motor. One touch , manual to motor;
- 2 WIFI connector: work with google home , Alexa amazon etc directly;
- 3 Schedule: Setting open and close time as your like, open when sun rise, and close when sunset
- 4 Long distance : open or close your home blinds on office or business with Wifi on ;
- 5 Easy mounting and setting : 3-5 minutes DIY on your fingertip position;
- 6 Control: Mobile and remote both can ;



## 1 Open Motor and Choose Blinds Direction

- 1 **Open motor:** The motor will open when slide mini button.
- 2 **Chain position: Left direction:** Facing blinds, chain/rope on left hand.  
**Right direction:** Facing blinds, chain/rope on right hand.
- 3 Surface up, slide mini button to left or right. light shine ;  
(Also can setting direction on APP more function)

**Note:** pls move carefully for mini button , to avoid break .

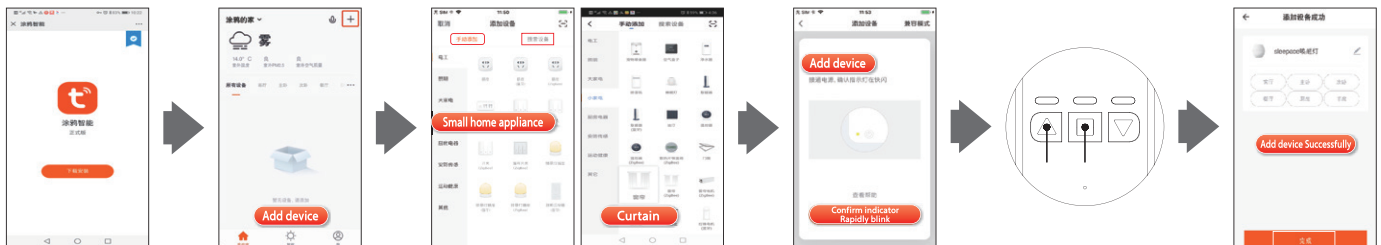


## 2 Built Connect With Mobile

- 1 Search and download **"Tuya Smart"** in major application markets or scan the **"QR code"** below to download the App,  
<https://en.tuya.com/>
- 2 OPEN **"tuya smart life"**, and connector with motor;



Sweep Downloads APP



Open  
**"Smart life"**  
App

Press  
**"Add device"**  
Or "+" on upper right corner

Choose  
**"Small home appliance"**  
—Curtain

Mobile  
**Confirm indicator**  
**Rapidly blink**

Long press **"up"** and **"stop"** together 6 seconds,  
until **"blue light"** shining, point mobile **"confirm**  
**indicator rapidly blink"**, input your wifi address  
and password

### Note:

- 1 ) The mobile will no any response for the motor after connector , it will response after **step 4 : TRIP SETTING .**

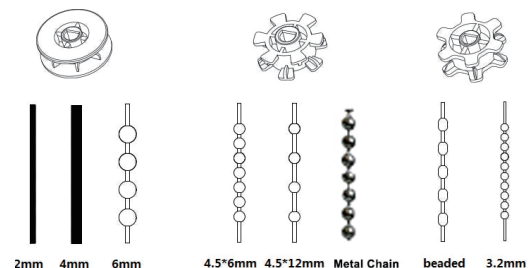
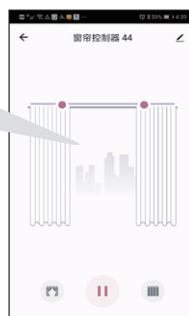


Photo 1 Suitable gear and chain

## 3 Mounting

- 1** Pull down the blinds to the similar mounting position. Put card on the bottom of chain, tight chain. According the chain position, mark "L" or "R" on hole, put mounting bracket on card's position, (pls note card outside of the bottom bar)
- 2** **Installation mode 1:**  
3M Adhesive, advice 3M use after 12 hours.
- 3** **Installation mode 2:**  
The whole on mounting bracket aligned marked position, Fix screw on the hole; two position for choose;
- 4** Press upback board outside, put suitable gearl on, take chain around gear, close upback board.
- 5** Tight chain on the motor, put motor slide groove down, until motor tight on groove, pls choose suitable chain tension for stable running.

**Note:** Pls be sure use the suitable gear for the chain, and adjust the tension, otherwise will noisy.

## 4 Trip Setting

- press "up" or "down" to required high limit position;
- high limit position (for ref)
- Long press "stop" button 5 seconds until red light flash;
- press down button and blinds run to the required low position
- Press stop button, trip setting finish. (Can also setting from low limit position to high limit position).

**Note:** If trip change for some urgent, pls reset.

## 5 Function Setting

- 1** **Schedule:** Can setting time as you like, Open when sunrise and close when sunset.

### Step 2:

Device added successfully → More → Schedule

- 2** **Voice control**

Smart life → Welcome home → upper right conner

- 3** **Connector with google Alexa etc**

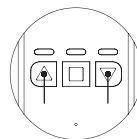
Tuya → Welcome home → me → more service → Alexa, google Assistant, Rokid, etc.

- 4** **Work not only with mobile, but also with remote.**

- Long press "stop" button 7 seconds until red light flash
- press "up" or "down" button, each one is ok.
- green, blue light on "up" "down" button will flash automatically twice, remote built connector with motor

## 6 Recover factory setting & Product take out

Pls long press "up" "down" button together 8 seconds, recover factory setting.



Top up the projection on bottom, slide upon groove, open upback board and take out chain.



## Parameters

<b>Name</b>	BLINDS CONTROLLER	<b>Model</b>	YH002	<b>Control Method</b>	MOBILE or REMOTE
<b>Torque</b>	1.35N.m	<b>Speed</b>	55rpm	<b>ADAPTER VOLTAGE</b>	110V-240V
<b>Frequency</b>	2.4GHz	<b>Voltage</b>	12V	<b>Rated Current</b>	1.2A
<b>Max Blinds Size</b>	8FT(2.5M)*12FT(3.5M)	<b>Max Weight</b>	10KG	<b>Battery Capacity</b>	12V/1200mAH
<b>Distance</b>	No limit, ask for good wifi signal	<b>Compatible</b>	Directly connector with google home, alexa etc		

Note: all product interpretation rights belong to Ningbo Yihao Blinds Co.,Ltd



## NINGBO YIHAO BLINDS CO.,LTD

**Address:** No.18 Changxing Road Luotuo Industry Zone Ningbo Zhejiang China 315202

**Web:** <http://www.yhblinds.com> **Phone:** 0086-574-87905396

